

“The Architecture of Alignment: Building Cincinnati’s Gateway to Housing Opportunity”

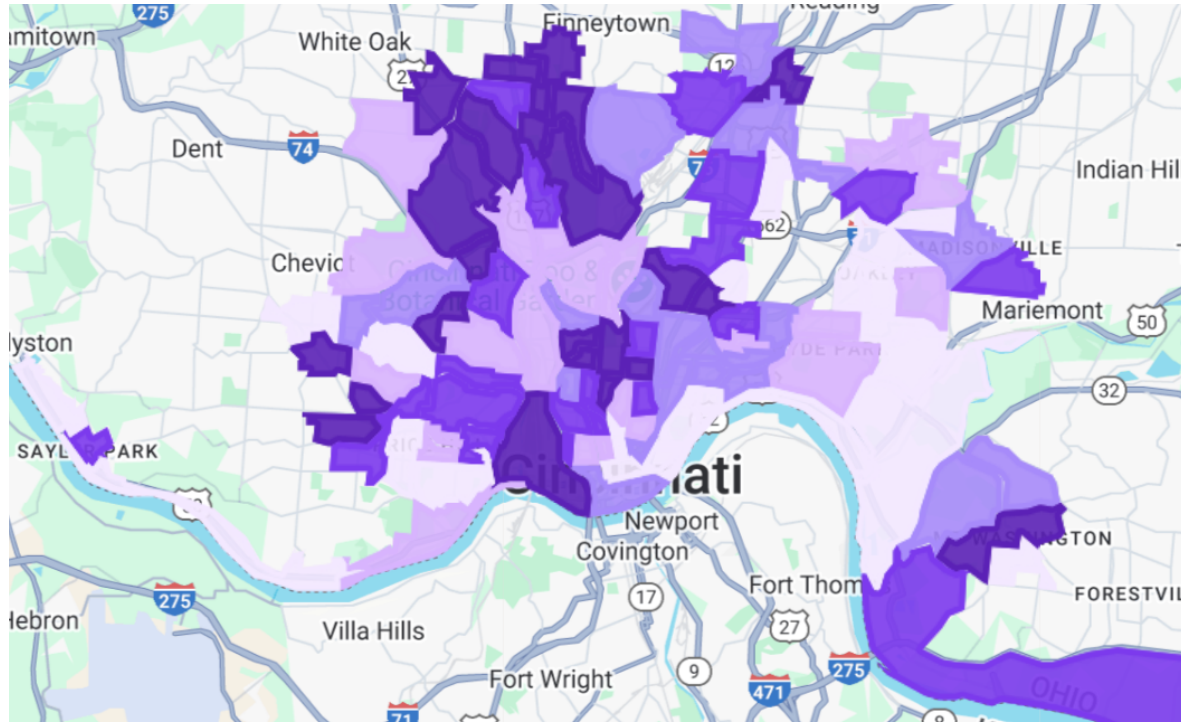
By: Ron Stubblefield, JD, MS, PMP

Director of Housing-Greater Cincinnati Foundation

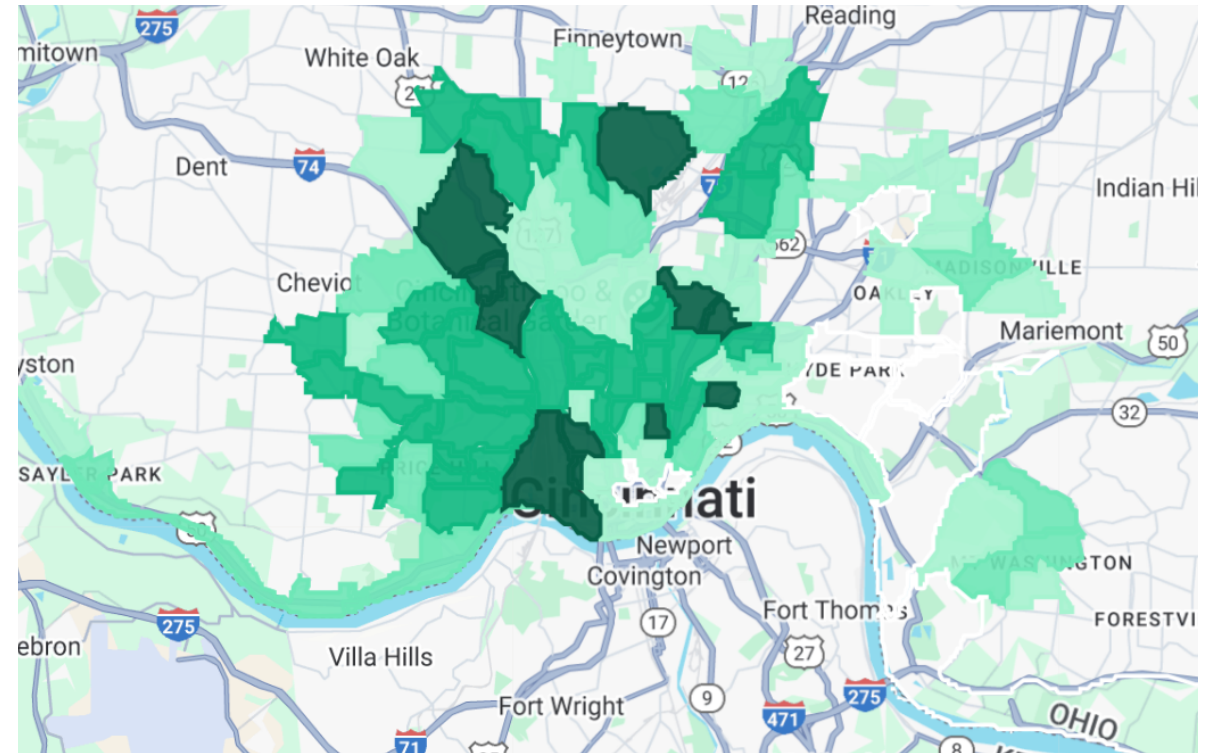
Where the Burden and Affordable Challenges Live

(Understanding where cost burden and income disparities converge.)

Darkest purple = 3–4 out of every 5 households are cost-burdened; lightest = 1 in 5.



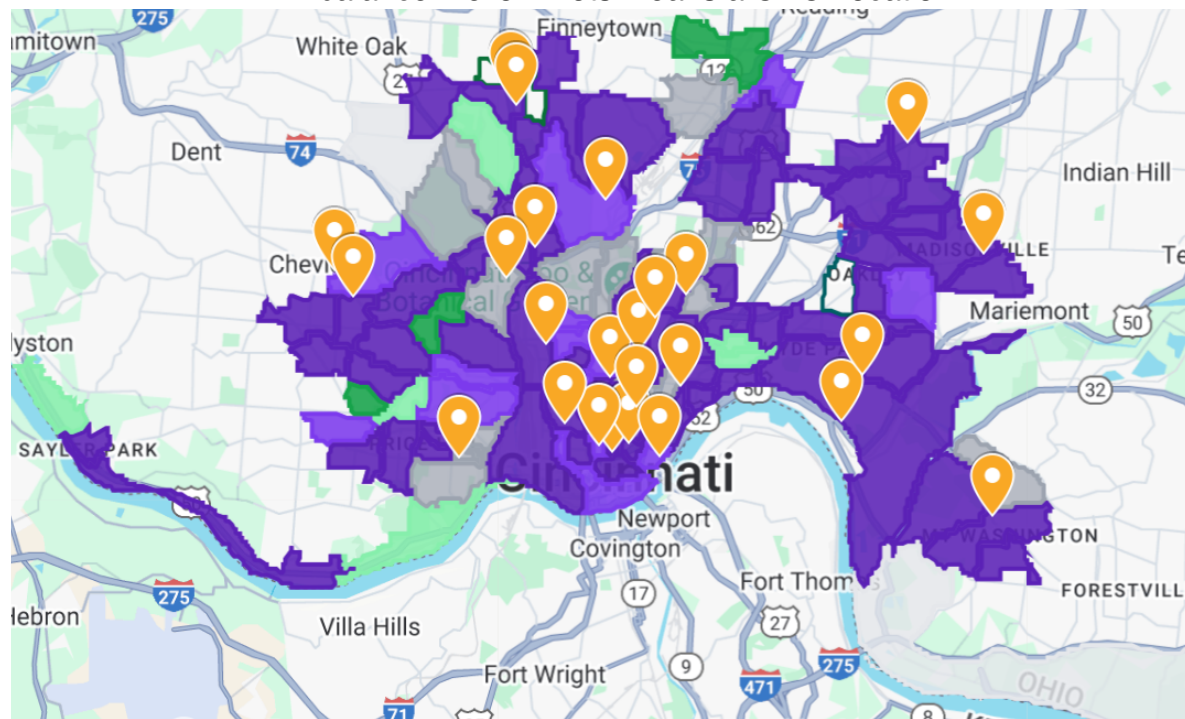
Darkest green = median income below \$24 K; Clear= at or above 100% of AML..



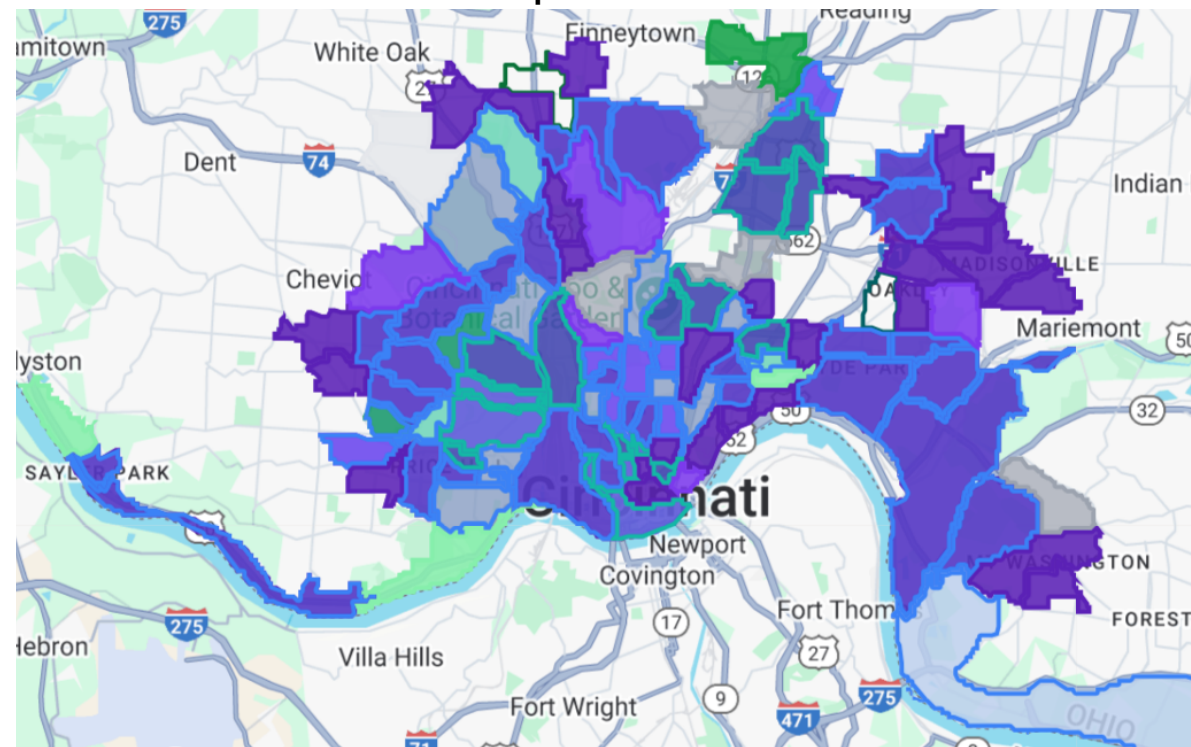
Where Supply Can Grow And the Tools To Leverage

(Targeting growth where readiness and opportunity meet)

Darkest purple = severely undersupplied; darkest green = oversupplied; gray = near balance. Yellow Dots Means a CDC Location

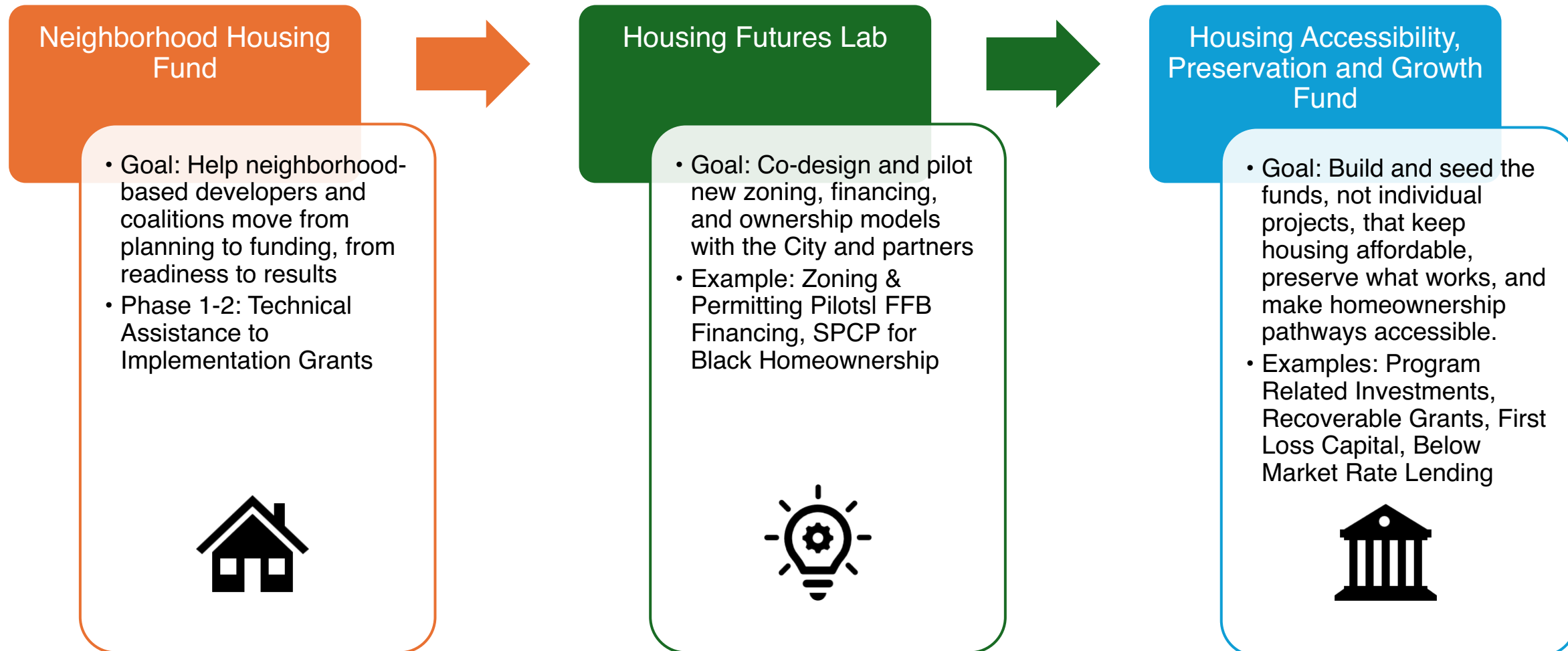


Blue overlays = areas eligible for 4 or more federal programs supporting housing development costs.



Moving Markets With Dignity

(The ecosystem for alignment: pairing data, training, and capital.)



Vision Forward

- This isn't just about adding dollars — it's about shared data, faster alignment, and a stronger ecosystem that moves from vision to viability. Cincinnati already has the talent, tenacity, and tools. What we need now is alignment.
- ***When strategy meets compassion, efficiency becomes empathy in motion. And empathy, put to work, changes everything.***

